

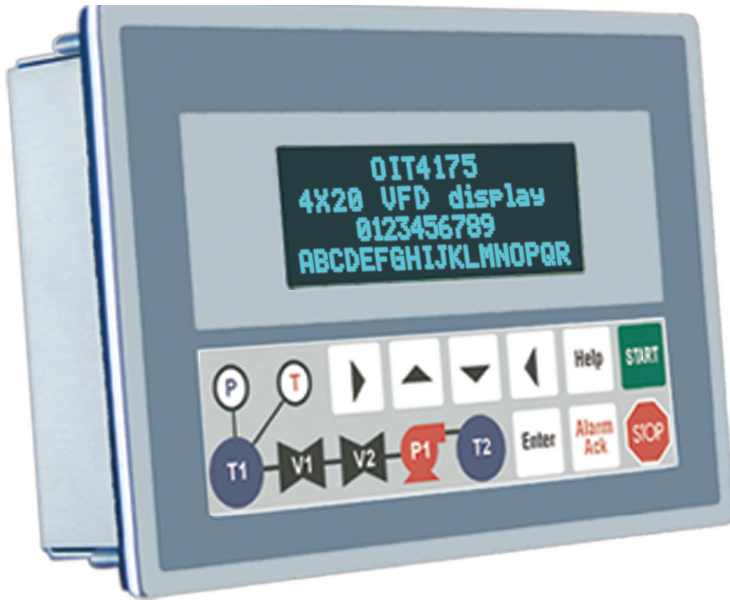
## OIT4175



**CLASS I  
DIVISION 2**

**NEMA4X**

### VFD Text Display with Customizable Keys



- 4 line by 20 character VFD display
- Membrane keypad with legendable inserts
- User-definable keys
- Serial RS232/RS485 ports
- Multiple PLC registers per screen
- Chain screens together
- Floating point
- Linear scaling
- 500 configurable screens
- Recipes and menus
- NEMA 4X, CE, UL certified
- Class I, Division 2 rating
- Extended operating temperature (-10 to 65°C)
- Programmed with OITware-200 software

The OIT4175 has an alphanumeric vacuum fluorescent display and a membrane-style keypad with custom legend. Each key is programmable, allowing you to define a unique keypad to match your specific application. The legendable insert feature means you don't have to pay extra for custom overlays to achieve a custom look.

A wide range of communications drivers are available: Allen-Bradley, Modicon, GE Fanuc, Keyence,

Control Microsystems, Bristol Babcock, and more. Over 100 brands of PLCs and motion controllers are supported.



OITware-200 configuration software includes recipes, menus, alarms, and the ability to create over 500 screens. Designed for harsh industrial environments, the OIT4175 carries a Class I, Division 2 rating and operates

under a wide temperature range.

The OIT4175 is a powerful and durable operator interface.

**Every Machine  
Needs the  
Human Touch**



[www.maplesystems.com](http://www.maplesystems.com)

# OIT4175 Specifications

## Hardware

Display	4 line by 20 character VFD display Viewing angle – approximately 90 degree
Key Type	Membrane-style keypad
Function Key	12 user-definable screen-dependent keys
Slide-in Legend	Customizable slide-in key legend

## Mechanical

Enclosure	Aluminum
Dimensions (WxHxD)	6 x 4 x 1.77 inches [152.4 x 101.2 x 45 mm]
Weight	0.99 lbs [0.45 kg]
Mounting	Panel
Power Requirements	12 to 30 VDC, 170 mA maximum

## Environmental

Operating Temperature	14 ~ 149°F (-10 ~ 65°C)
Storage Temperature	-22 ~ 176°F (-30 ~ 80°C)
Relative Humidity	5% ~ 95% (non-condensing)
Ratings	NEMA4X, IP65
Certifications	CE, cULus (Class I, Division 2)

## Enhanced Features

Recipe Screens	Allow the operator to download or upload preset values into PLC registers.
Memory Storage for Motion Controllers	Stores data internally using the recipe screen feature. Data can be uploaded from the controller and stored in the OIT's non-volatile flash memory.
Multiple Language Support	Allows you to "split" the 500 screens into 2, 5, or 10 separate groups or languages.
Choose Your Own Keys	<ul style="list-style-type: none"> <li>• <b>Global Function Keys</b> – Up to 24 global function keys. Each key can display one of 500 user-definable screens or simulate a momentary or push-on/push-off mechanical switch.</li> <li>• <b>Screen-Dependent Function Keys</b> – With 8 keys available, you have the equivalent of 4000 function keys.</li> </ul>

Specifications subject to change without notice.

Terminals von Maple Systems erhalten Sie bei



Betriebs- und Datentechnik GmbH

Ilseder Hütte 10, 31241 Ilsede  
 Tel.: 05172 1290-0, Fax: 05172 1290-12  
 E-Mail: info@schwalenberg.com  
 Internet: www.schwalenberg.com